



LAMB & CO

Call us on 01255 422 240  
Inspired by property, driven by passion.



## KILN CRESCENT, HARWICH, CO12 4PS PRICE £259,995

\*OPEN EVENT-SATURDAY 11TH APRIL\* Kiln Crescent, a new development in the heart of Harwich offering a stylish selection of two and three bedroom homes designed for modern living. Each home features spacious open-plan layouts, high-quality integrated appliances, and two private parking spaces per plot for added convenience.

With thoughtfully designed interiors and a focus on comfort and practicality, Kiln Crescent provides the perfect setting for first-time buyers, growing families, or those looking to downsize.

Personalise your new home with a choice of upgrade finishes, allowing you to create a space that truly reflects your style and discover modern coastal living with all the benefits of a brand-new,

- Three bedroom semi-detached house
- OPEN EVENT-SATURDAY 11TH APRIL
- Integrated appliances included
- Two allocated parking spaces
- Open-Plan Kitchen/Living/Dining
- EV charging port



Sales | Lettings | Commercial | Land & New Homes  
sales@lambandcoproperty.co.uk | www.lambandcoproperty.co.uk

## Paragraph

Accommodation comprises with approximate room sizes as follows:

Entrance door to:

### ENTRANCE HALL

### KITCHEN/DINING

17'0" x 9'4" (5.20 x 2.85)

### LIVING ROOM

16'11" x 11'0" (5.18 x 3.36)

### WC

### LANDING

### BEDROOM ONE

9'10" x 9'9" (3.02 x 2.98)

### ENSUITE

### BEDROOM TWO

11'0" x 9'2" (3.36 x 2.81)

### BEDROOM THREE

11'0" x 7'5" (3.36 x 2.27)

### BATHROOM

### FRONT ASPECT

## Material Information

Council Tax Band: TBC

Heating: Air Source Heat Pump

Services:

Broadband: Ultrafast Fibre

Mobile Coverage:

Vodafone-80%

EE-79%

O2-78%

Three-66%

Construction: Conventional

Restrictions: N/A

Rights & Easements: N/A

Flood Risk:

Surface Water- Very Low

Rivers & Sea-Very Low

Additional Charges: £328.31 P/A

Seller's Position: No onward chain- new build

Garden Facing: North West

## Agents Note Sales

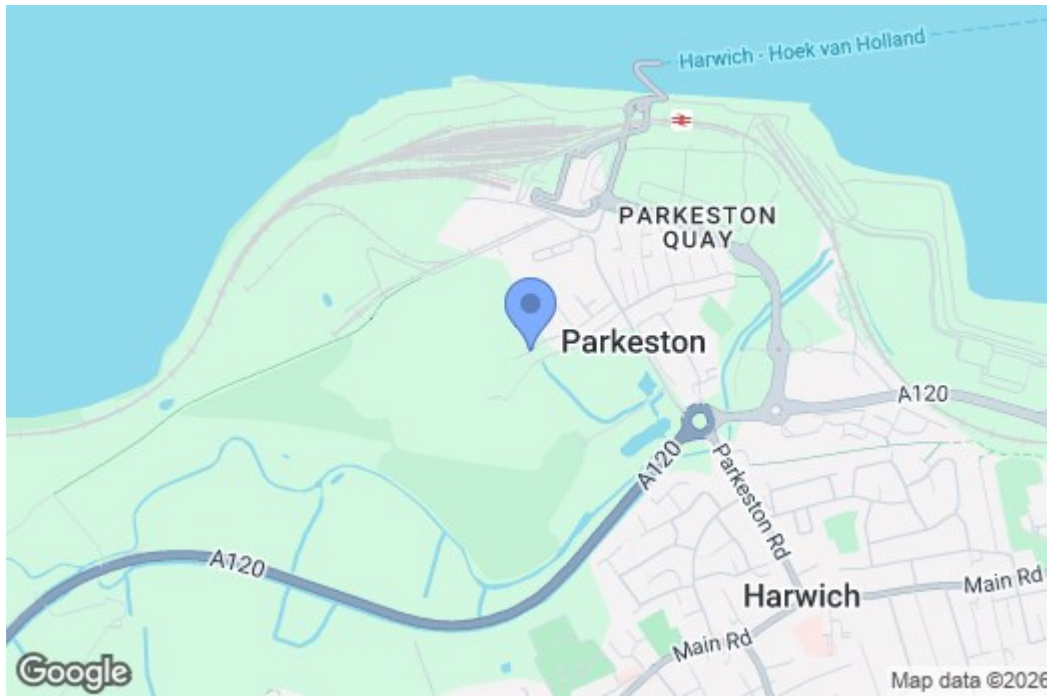
PLEASE NOTE - Although we have not tested any of the Gas/Electrical Fixtures & Fittings, we understand them to be in good working order, however it is up to any interested party to satisfy themselves of their condition before entering into any Legal Contract.

## AML

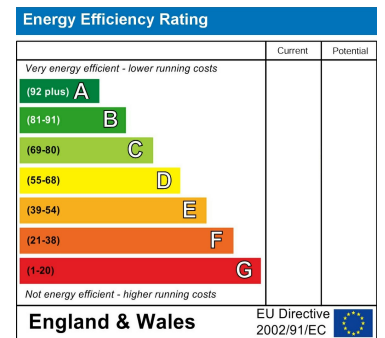
ANTI-MONEY LAUNDERING REGULATIONS 2017

- In order to comply with regulations, prospective purchasers will be asked to produce photographic identification and proof of residence documentation once entering into negotiations for a property.

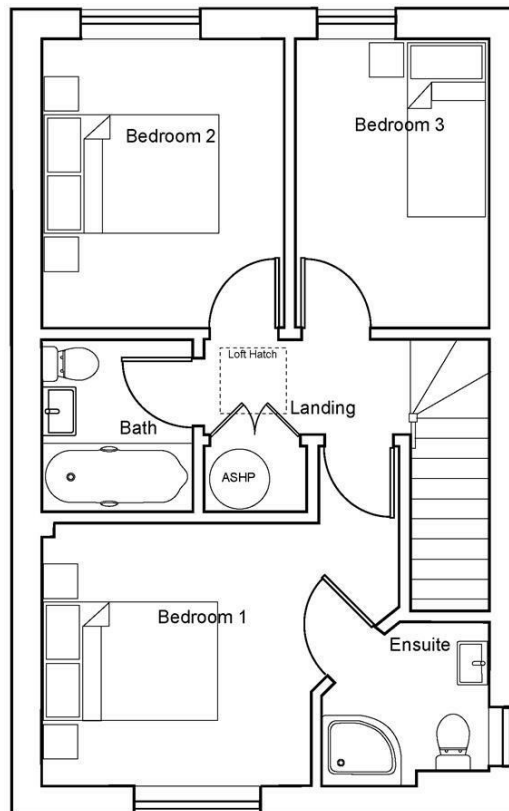
## Map



## EPC Graphs



## Floorplan



Una Road - Plot 11 - First Floor

These particulars, whilst believed to be accurate are set out as a general outline only for guidance and do not constitute any part of an offer or contract. Intending purchasers should not rely on them as statements of representation of fact, but must satisfy themselves by inspection or otherwise as to their accuracy. No person in this firm's employment has the authority to make or give any representation or warranty in respect of the property.